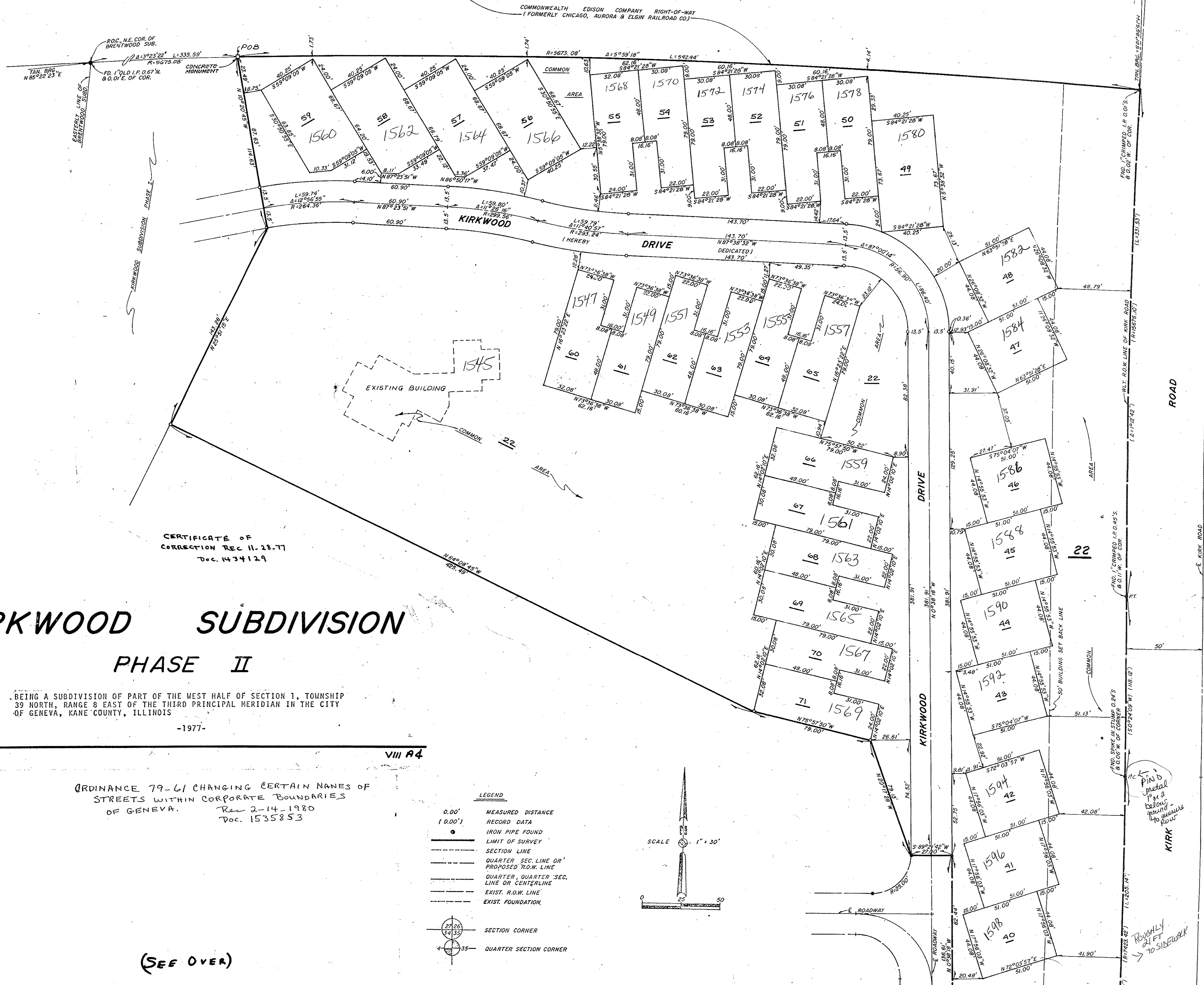


DBDS 1547-1569 Phase II
EVEN-1560-1598



CERTIFICATE OF CORRECTION REC. 11-23-77
Doc. 1434129

KIRKWOOD SUBDIVISION PHASE II

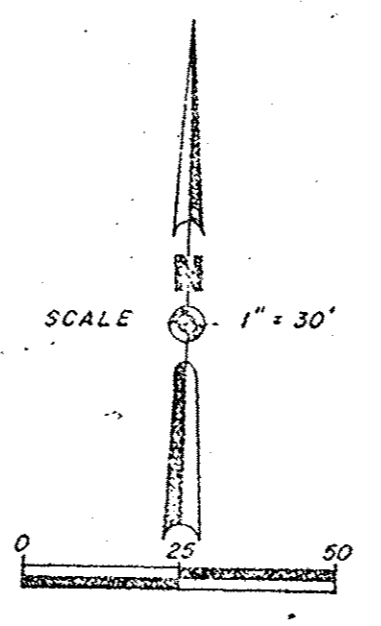
BEING A SUBDIVISION OF PART OF THE WEST HALF OF SECTION 1, TOWNSHIP 39 NORTH, RANGE 8 EAST OF THE THIRD PRINCIPAL MERIDIAN IN THE CITY OF GENEVA, KANE COUNTY, ILLINOIS

-1977-

VIII A4

ORDINANCE 79-61 CHANGING CERTAIN NAMES OF STREETS WITHIN CORPORATE BOUNDARIES OF GENEVA.
Res. 2-14-1980
Doc. 1535853

- LEGEND**
- 0.00' MEASURED DISTANCE
 - (0.00') RECORD DATA
 - IRON PIPE FOUND
 - LIMIT OF SURVEY
 - SECTION LINE
 - QUARTER SEC. LINE OR PROPOSED R.O.W. LINE
 - QUARTER QUARTER SEC. LINE OR CENTERLINE
 - EXIST. R.O.W. LINE
 - EXIST. FOUNDATION
 - SECTION CORNER
 - QUARTER SECTION CORNER



(SEE OVER)

BOOK 73 OF PLAT BOOKS 244 25 1418899

(See Page 25)